

Table of Contents

Overview	2
How Sonar works	2
Product Specification	3
Product List	4
Launcher Lish	5
Receiver List	6
Key Function	7
Power On/Off	7
Display View	8
Accessing Menu Features	9
Sensitivity	10
Backlight (Fishing at Night)	11
Depth Range	11
Zoom	12
Fish Alarm	14
Depth Alarm (Shallow)	14
Contrast	15
Chart Speed	15
Fish Symbols and Fish Depth	16
Units	17
Simulator On/Off	17

Overview

This amazing product is especially designed for amateur and professional fishermen alike, to find out the location of fish, depth and bottom contour of water.

The unit can be used in ocean, river or lake and is fantastic for detecting schools of fish in any particular area.

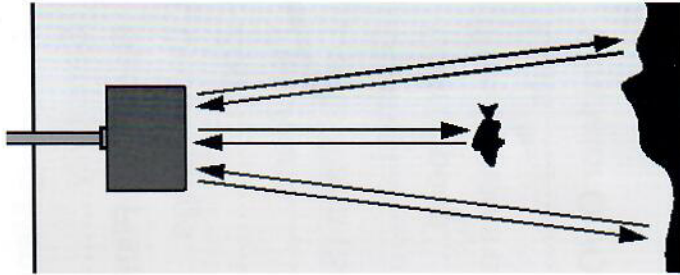
Using amazing and innovative technology, this fish finder is the ideal tool to bring the fish to you!

How Sonar Works

Sonar technology is based on sound waves.

The system uses sonar to locate and define structure, bottom contour and composition, as well depth directly below the transducer.

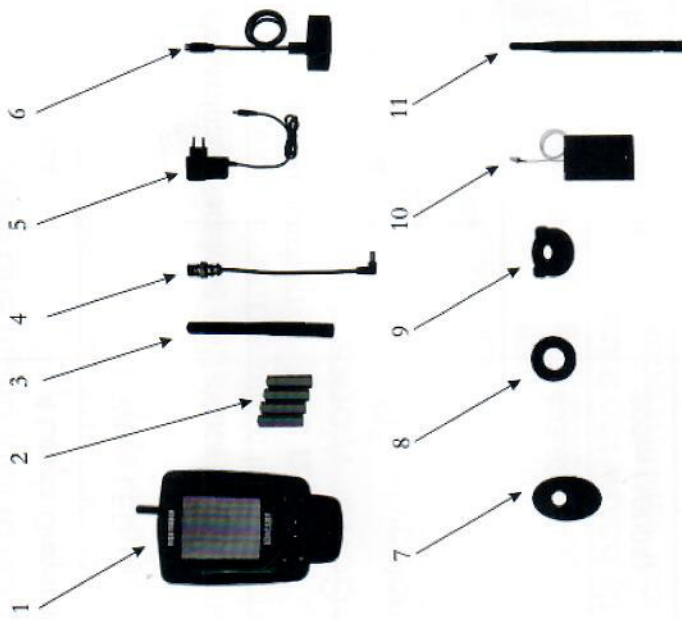
The transducer sends a sound wave signal and determines distance by measuring the time between the transmission of the sound wave and when the sound wave is reflected off an object; then it uses the reflected signal to interpret location, size, and composition of an object.



Product Specification

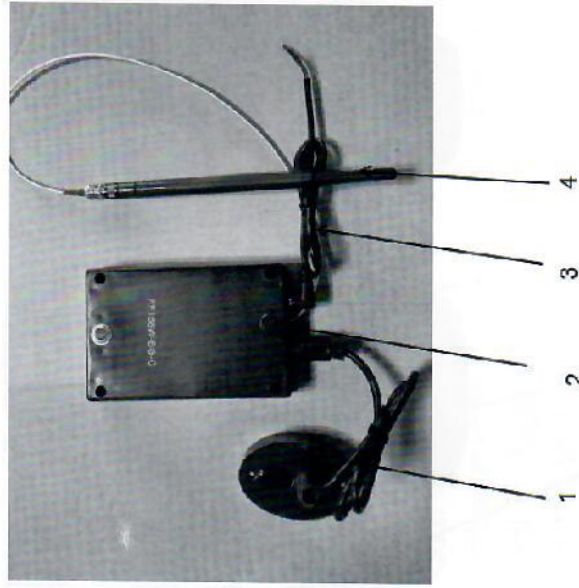
Model	FF168W-BG
Display Type	4 Levels Grayscale LCD
Back Lighting	White LED
Power Input(Receiver)	4pcs 5# battery
Power Input(Launcher)	DC 12V
Detect Angle	45°
Sonar Frequency	200KHz
Radio Frequency	433.92MHz
Radio Range Max	300m (1000ft)
Depth Range Min	0.6m (2ft)
Depth Range Max	36m (120ft)
Operational	-20---70 °C

Product List



- 1.Receiver
- 2.Receiver Battery
- 3.Receiver Antenna
- 4.Receiver Power Line
- 5.Receiver Charger
- 6.Sonar Transducer
- 7.Oval Waterproof Gasket
- 8.Waterproof Gasket
- 9.Lock nut
- 10.Transmitter
- 11.transmitter antenna

Transmitter List



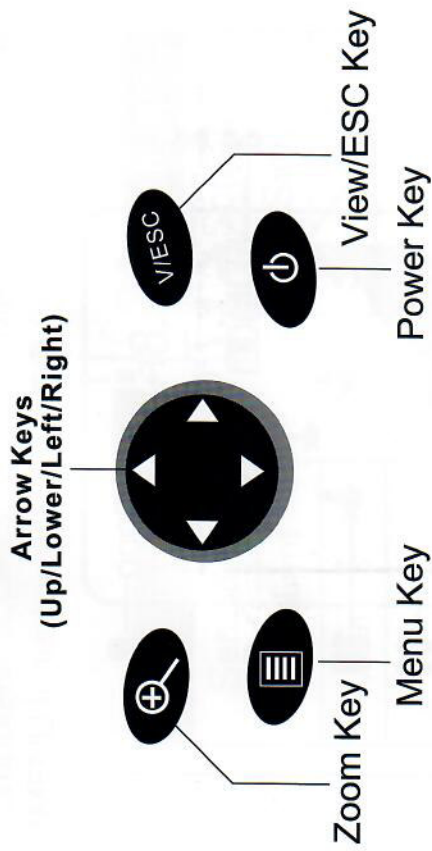
1. Sonar Transducer
2. Transmitter
3. Transmitter power line
4. Transmitter Antenna

Receiver List



1. Receiver
2. Receiver Antenna
3. Receiver Battery box
4. Receiver Battery box cover
5. Receiver Power line

Key Function



Power On/Off

Press and release Power Key to power the unit On, the Loading Page is displayed first. After a few seconds the unit starts to work.

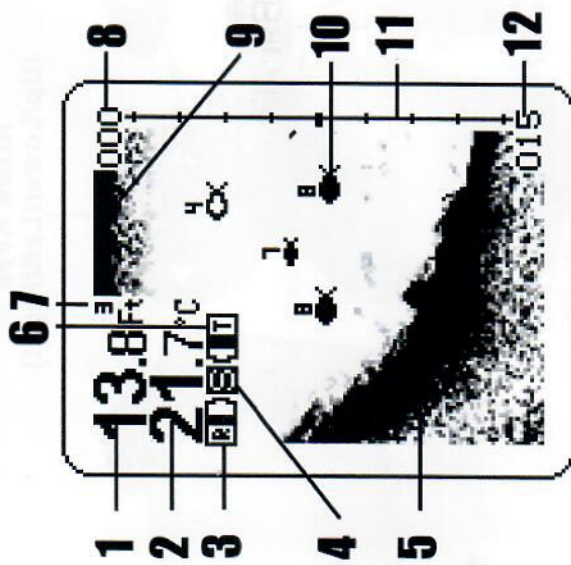
Loading.....

Press and hold Power Key until the Shutdown Page is displayed, release the Power Key to power Off.

Shutdown

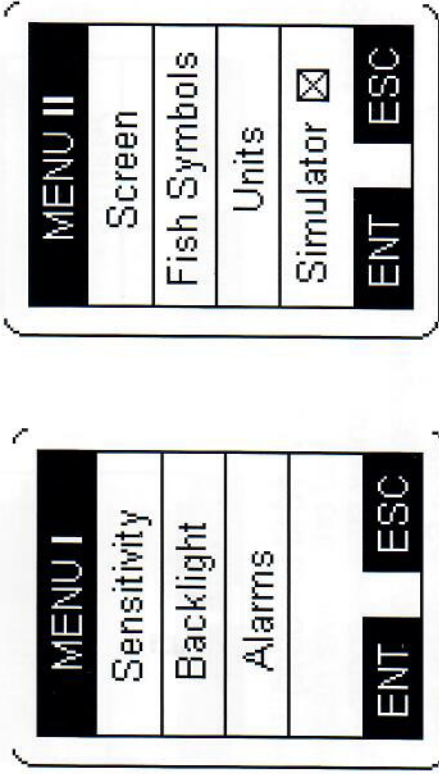
Automatic power off feature: The display will shut off automatically when the depth display reads "----" continuously for 5 minutes.

Display View



1. Water Depth
2. Water Temperature
3. Receiver Battery Strength Indicator
4. Simulator Indicator
5. Bottom Contour
6. Transmitter Battery Strength Indicator
7. Channel Indicator
8. Upper Limit
9. Surface Clutter
10. Fish Icon with Depth
11. Fish Scale
12. Fish Scale

When you press the Menu key, the "MENU I" temporarily appears, press the Menu key again, the "MENU II" temporarily appears.

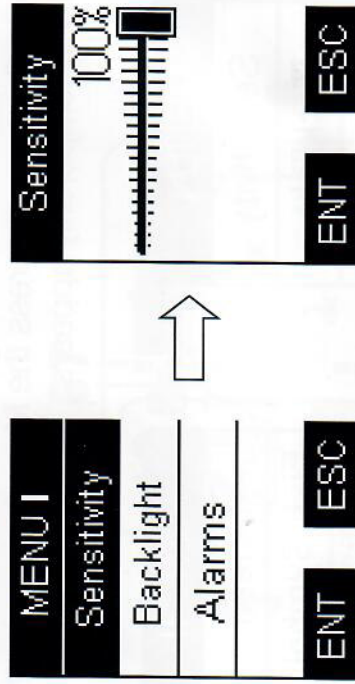


When the "MENU I (MENU II)" appears, press the upper or lower arrow keys to highlight a command, and press the Enter/Zoom key to enter this submenu, or press the Esc/Backlight key to return main screen.

In the submenu, press the upper or lower arrow keys to highlight a command, press the left or right key to change the value.

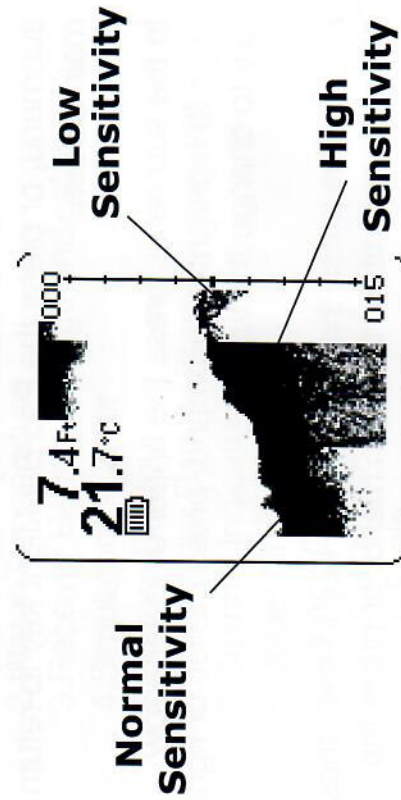
At this time press the Enter/Zoom key to save these changes and return the main menu, or press the Esc/Backlight key to quit.

Sensitivity

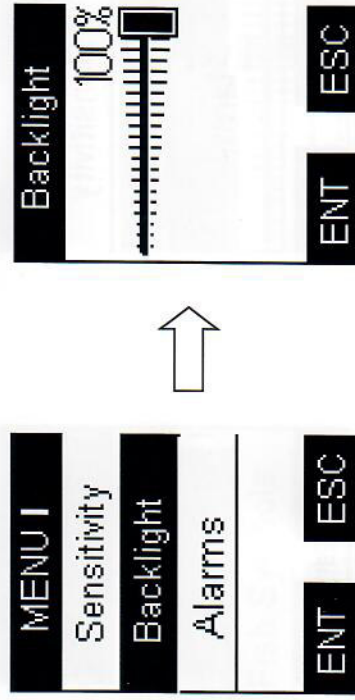


(Setting Saved in Memory, 10% to 100%)

Select a higher number to show smaller sonar returns on screen, or a lower number to remove clutter from the screen. Adjusting Sensitivity also affects how sonar returns are identified as Fish Icon Symbols - more fish will be detected at a higher setting, fewer at a lower setting.



Backlight (Fishing at Night)

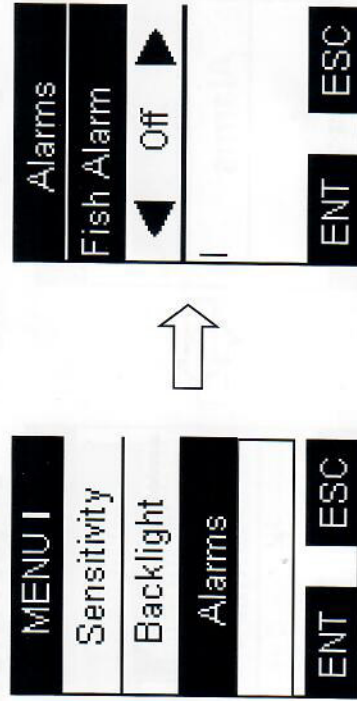


(Setting Saved in Memory, off, 10% to 100%)
User can switch the backlight or adjust the brightness as needed.
In addition, press the Esc/Backlight key can switch the backlight in the main screen.

NOTE:

Continuous backlight operation significantly decreases battery life on Unit Portables.

Fish Alarm

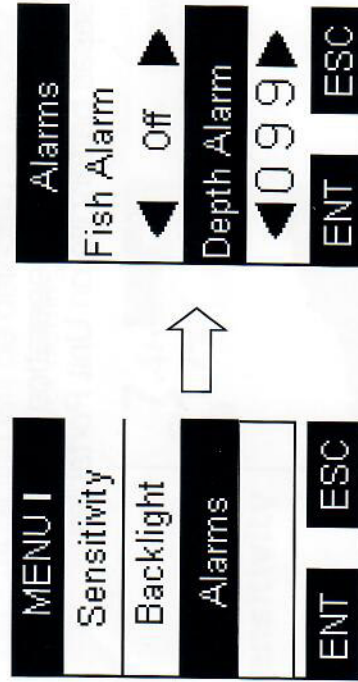


(Setting Saved in Memory)

Select OFF for no fish alarm, or select On to set the fish alarm.

An audible alarm sounds when the fish symbols appears on the screen.

Depth Alarm(Shallow)

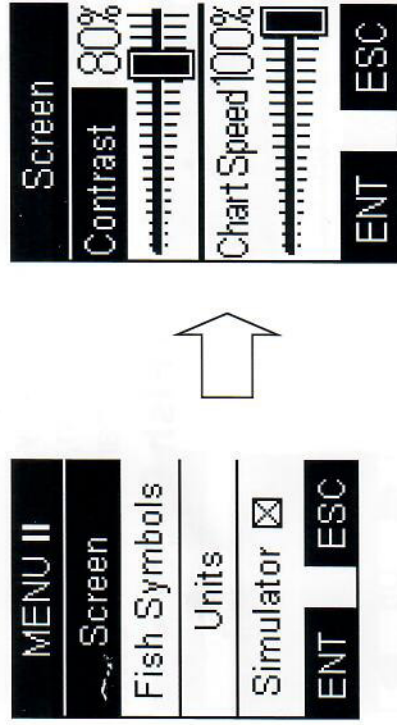


(Setting Saved in Memory)

Select OFF for no Depth Alarm; select a number from 3-99" to set the alarm depth point and turn it on.

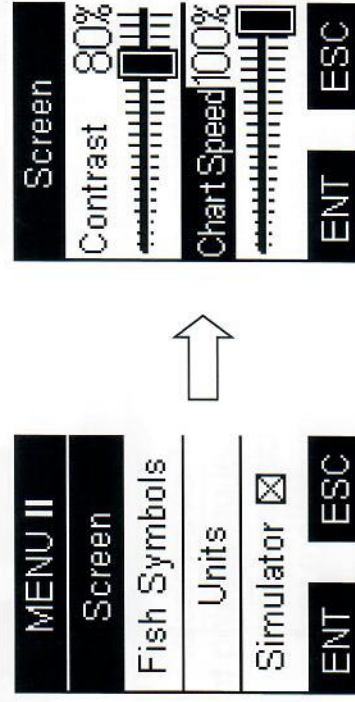
An audible alarm sounds when the depth is equal to or less than the setting.

Contrast



(Setting Saved in Memory, 10% to 100%)

Chart Speed

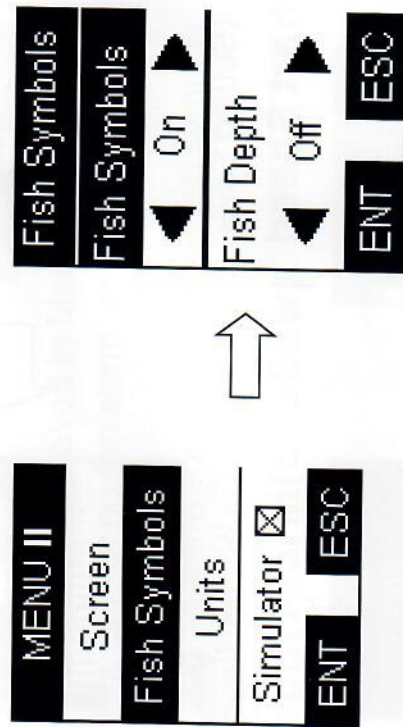


(Setting Saved in Memory, 10% to 100%)

Select a setting from 10%-100% to increase or decrease the chart speed, where 10% is the slowest and 100% is the fastest chart speed.

In addition, press the Power key can stop the Screen chart in the main screen, and press the Power key again the screen chart will be recovered.

Fish Symbols and Fish Depth

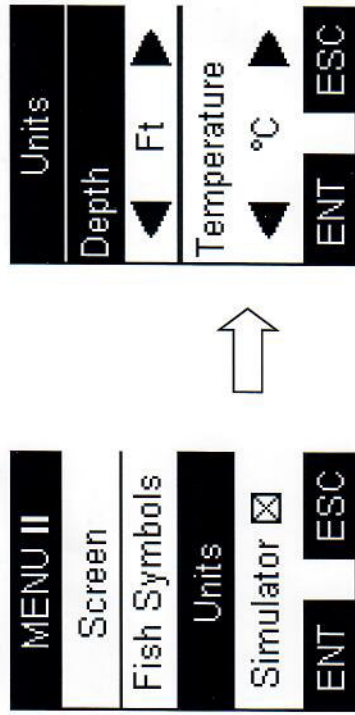


(Setting Saved in Memory)

Select either Off to view "raw" sonar returns from the narrow beam, or On to view Fish symbols. Fish Symbol uses advanced signal processing to interpret sonar returns, and will display a Fish Symbol when selective requirements are met. A select number of possible fish returns will be displayed with their associated depth.

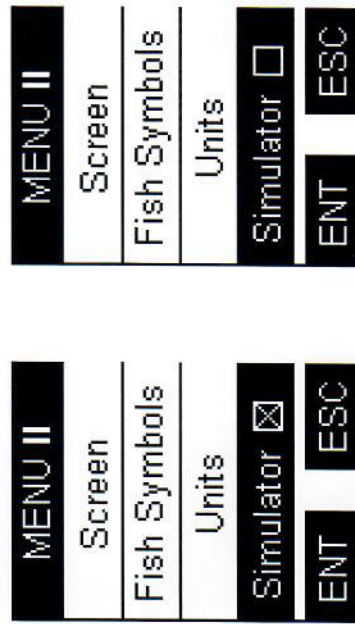
Fish Icon, 200KHz, Wide Beam

Units



(Setting Saved in Memory, Ft/M, °F/°C)

Simulator On/Off



(Setting Saved in Memory)